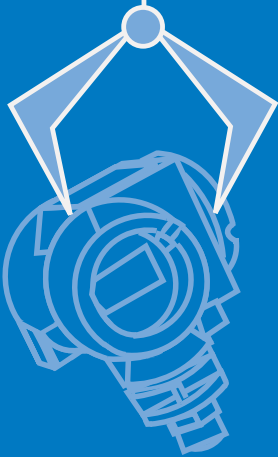


# CONTROL

F O R T H E P R O C E S S I N D U S T R I E S

# Prize Picks

Process Control Professionals Tell  
Who Offers the Best Technologies  
and Service in Our 11th Annual  
Readers' Choice Awards





# Prize Picks

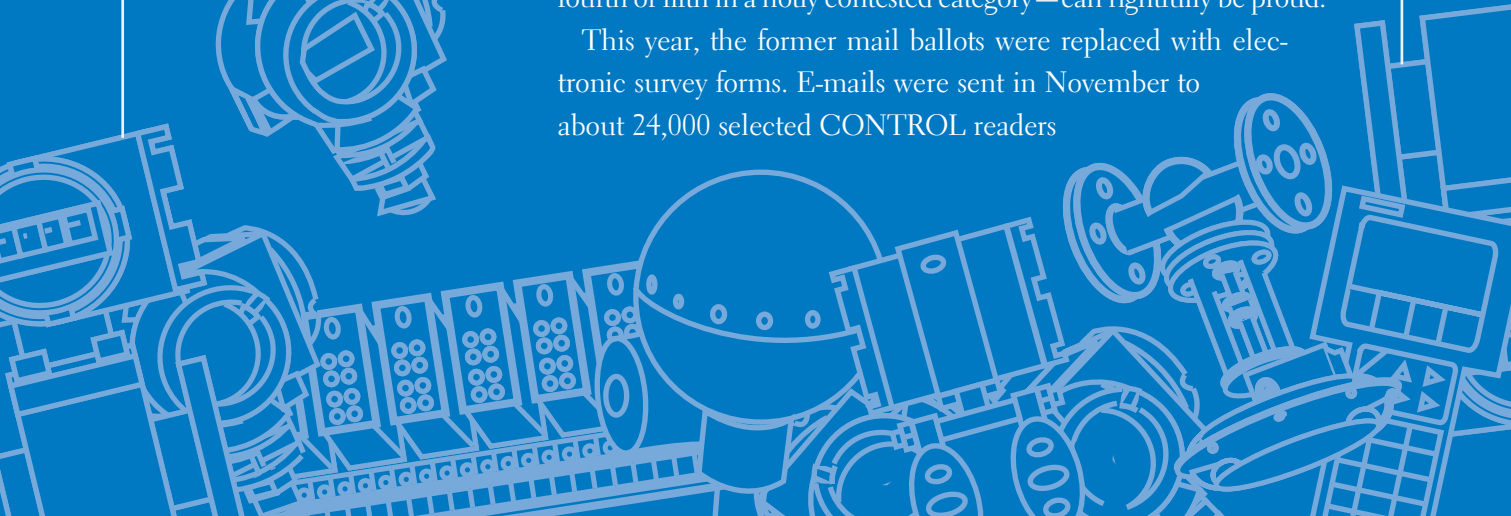
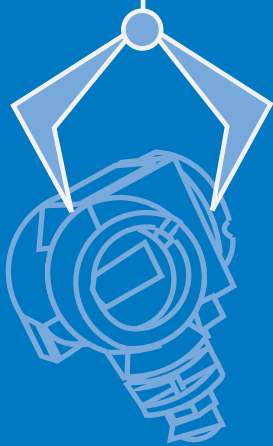
By Dave Fusaro, Executive Editor

Times are difficult enough without unreliable suppliers pushing substandard products on harried process control engineers...who are doing the work of three people, instead of just two.

Especially in trying times, it's good to find vendors who can provide solutions (excuse the buzzword) instead of problems that need to be rendered useful and integrated into the plant control scheme. That's exactly what the next nine pages show: the cream of the process control, automation, and instrumentation crop.

As we have every year since the survey's inception, CONTROL asked its readers to name the vendors of the best technologies in 65 categories and rate their customer service. These are the people whose opinions really count: They have the first-hand experience with how these instruments function, and they carefully spend their companies' increasingly scarce funds for instrumentation and controls. Any supplier that finds its name on the following pages—even fourth or fifth in a hotly contested category—can rightfully be proud.

This year, the former mail ballots were replaced with electronic survey forms. E-mails were sent in November to about 24,000 selected CONTROL readers



## Process Control Professionals Tell Who Offers the Best Technologies and Service in Our 11th Annual Readers' Choice Awards

### VENDORS OFFERING EXCEPTIONAL SERVICE (5 = EXCELLENT, 1 = POOR)

**4.8**  
Munger/Mimic .....Software, Simulation

**4.6**  
Emerson Process Management ...Software, Human-Machine Interface  
Emerson Process Management .....Software, SCADA

**4.5**  
Emerson Process Automation .....Control System, Safety/  
Emergency Shutdown  
Emerson Process Management .....Software, Neural Network  
Rockwell Automation .....Software, SCADA

**4.4**  
Emerson Process Management .....Control System, Hybrid  
Emerson Process Management .....Input/Output System  
Emerson Process Management .....Software, Batch  
Control/Management  
Emerson Process Management .....Software, Expert System  
Emerson Process Management .....Software, Loop Tuning  
Emerson Process Management .....Software, Process Control  
Emerson/Micro Motion ...Process Analyzer, Density/Concentration  
Emerson/Rosemount .....Resistance Temperature Detector  
Emerson/Rosemount .....Thermocouple  
Endress + Hauser .....Level Switch, Point  
Rockwell Automation .....Industrial Computer  
Rockwell Automation .....Panel Display  
Rockwell Automation .....Software, Batch Control/Management  
Rockwell Automation .....Software, Human-Machine Interface  
Rockwell Automation .....Software, Process Control  
Weidmuller .....Terminal Block  
Yokogawa .....Process Analyzer, pH/ORP/Conductivity

**4.3**  
Emerson Process Management .....Control System, Process  
Emerson/Fisher Controls .....Control Valve  
Emerson/Rosemount .....Pressure Transmitter  
Emerson/Rosemount Analytical .....Process Analyzer, Stack  
Gas/Emissions  
Emerson/Saab-Rosemount .....Level Gauge, Inventory Grade  
Honeywell Industry Solutions .....Software, Loop Tuning  
Phoenix Contact .....Signal Conditioner  
Rockwell Automation .....Input/Output System  
Rockwell Automation .....Operator Interface Terminal  
Rockwell Automation .....Terminal Block

**4.2**  
Dell .....Industrial Computer  
Dell .....Operator Interface Terminal  
Emerson Process Management .....Software, Asset Management  
Emerson Process Management ...Software, Calibration Management  
Emerson Process Management ...Software, Design/Documentation  
Emerson Process Management .....Software, Simulation  
Emerson/Fisher Controls .....Level Gauge, Float/Displacer

Emerson/Micro Motion .....Flowmeter, Coriolis Mass  
Emerson/Rosemount .....Flowmeter, Magnetic  
Emerson/Rosemount .....Flowmeter, Vortex  
Emerson/Rosemount Analytical ...Process Analyzer, Chromatograph  
Invensys/Wonderware .....Software, Batch Control/Management  
Pyromation .....Resistance Temperature Detector  
Rockwell Automation .....Control System, Hybrid  
Rockwell Automation .....Control System, Process  
Rockwell Automation .....Electric Motor Drive  
Yokogawa .....Flowmeter, Magnetic

**4.1**  
ABB .....Flowmeter, Magnetic  
Ametek Drexelbrook .....Level Gauge, Electrical Property-Based  
Ametek Drexelbrook .....Level Gauge, Ultrasonic  
Ametek Drexelbrook .....Level Switch, Point  
Bently Nevada .....Vibration Instrumentation  
Emerson Process Management .....Controller, Process Loop  
Emerson/Rosemount Analytical .....Process Analyzer,  
pH/ORP/Conductivity  
Emerson/Saab-Rosemount .....Level Gauge, Radar  
Honeywell Industry Solutions .....Remote Terminal Unit  
Krohne .....Flowmeter, Magnetic  
Mettler Toledo .....Weighing System/Load Cell  
Ohmart/Vega .....Level Gauge, Radar  
Omega Engineering .....Thermocouple  
OSI Software .....Software, SCADA  
Phoenix Contact .....Terminal Block  
Rockwell Automation .....Controller, Programmable Logic  
Rockwell Automation .....Remote Terminal Unit  
Yokogawa .....Recorder

**4.0**  
ABB .....Control System, Process  
Emerson/Brooks Instrument .....Flowmeter, Thermal Mass  
Emerson/Brooks Instrument .....Flowmeter, Variable Area  
Emerson/Rosemount .....Temperature Transmitter  
Fluid Components International .....Flow Switch  
GE Fanuc .....Software, PLC Programming  
Hoffman Engineering .....Enclosure  
Honeywell Industry Solutions .....Control System, Hybrid  
Honeywell Industry Solutions ...Software, Batch Control/Management  
Honeywell Industry Solutions .....Software, Simulation  
Intellution/GE Fanuc .....Software, Process Control  
Invensys/Foxboro .....Process Analyzer, pH/ORP/Conductivity  
Invensys/Wonderware .....Software, SCADA  
Ohmart/Vega .....Level Gauge, Nuclear  
Rockwell Automation ...Control System, Safety/Emergency Shutdown  
Rockwell Automation .....Software, PLC Programming  
Siemens Energy & Automation .....Input/Output System  
Siemens Energy & Automation .....Operator Interface Terminal  
Sola Hevi-Duty .....Power Supply  
Thermo MeasureTech .....Level Gauge, Nuclear  
Yokogawa .....Flowmeter, Vortex

who say they have the authority to specify, recommend, or buy the instrumentation and control equipment and software involved in this survey. Responses were received from 823.

The simple question was: "Please identify by name the best supplier, in your opinion, in each of the following technology categories." Beyond that starting point, respondents may weigh cost versus benefit, ease of use, performance, reliability, service life, even who and how big the supplier is. And a lot depends upon the application. Then there is the consideration of customer service. If the engineer, his company, or anyone he knows has had an experience, good or bad, with a given vendor, that can weigh pretty heavily.

The survey also asked respondents to rank that aspect of their chosen suppliers on a scale of 1 (poor) to 5 (excellent). Vendors that provide excellent service (average rating of 4.0 or higher) are listed in the accompanying table.

### The Usual Suspects

It should come as no surprise that the biggest company in the process control world also won the most categories. But the number that Emerson Process Management swept is remarkable: 28 categories. And that number is up from the 21 categories the company won last year.

Rockwell made its annual impressive showing, capturing seven categories including the Programmable Logic Controller category it has dominated for many years. As evidence that General Electric is growing its interest in process control, GE topped three categories, all via recent acquisitions. In addition to Intellution in SCADA, GE Panametrics led in Humidity/Moisture Analyzer and in Ultrasonic Flowmeter. Also winning three categories were Ametek (Annunciator, Electrical Property-Based Level Gauge, and Point Level Switch) and Siemens (Process Loop Controller, Open Channel Flowmeter, and Ultrasonic Level Gauge).

Every year there are dominators in some areas. Category killers with more than 50% of the vote in a product grouping include Emerson/Fisher in Control Valve (63%); Emerson/Micro Motion in Coriolis Mass Flowmeter (81%); Emerson/Brooks Instrument in Variable Area Flowmeter (59%); Emerson/Rosemount in Pressure Transmitter (60%); Emerson in Asset Management Software (56%), in Calibration Management Software (51%), and in Neural Network Software (54%); Hoffman Engineering in Enclosure (65%); Fluke, which acquired competitor Altek/Transmation, in Portable Calibrator (73%); Rockwell in PLC (65%) and PLC Programming Software (60%); Bebcos in Purge System (64%); Bently Nevada in Vibration Instrumentation (76%); and Belden in Wire & Cable (63%).

Despite the fact that this is a quest for the best, voting requires familiarity with the products involved. So, to some extent, this is a measure of installed base. It also is not immune to sustained marketing efforts on the part of

supplier organizations.

But it is the voice of our readers. And it is one measure of how good a supplier is...or could be, to an engineer looking for a new supplier or a new type of product. These days, you can use all the help you can get.



MSA'S ULTIMA

#### ANALYZER, AMBIENT GAS DETECTOR

- |            |     |
|------------|-----|
| 1. MSA     | 37% |
| 2. Draeger | 9%  |



EMERSON'S GCX

#### ANALYZER, CHROMATOGRAPH

- |                                 |     |
|---------------------------------|-----|
| 1. Emerson/Rosemount Analytical | 36% |
| 2. ABB                          | 18% |
| 3. Siemens Applied Automation   | 10% |



MICRO MOTION'S ELITE SERIES

#### ANALYZER, DENSITY/CONCENTRATION

- |                         |     |
|-------------------------|-----|
| 1. Emerson/Micro Motion | 40% |
| 2. Thermo MeasureTech   | 14% |
| 3.* Ohmart/Vega         | 7%  |
| Electron Machine        | 5%  |
| Mobrey/Solartron        | 5%  |



PANAMETRICS' MOISTURE IMAGE SERIES

#### ANALYZER, HUMIDITY/MOISTURE

- |  |     |
|--|-----|
| 1. GE Panametrics                          | 21% |
| 2. Emerson/Rosemount Analytical            | 15% |
| 3.* Vaisala                                | 10% |
| Honeywell Industrial Measurement & Control | 8%  |
| 5. General Eastern                         | 5%  |
| Thermo Moisture Systems                    | 5%  |



EMERSON'S PH/ORP/CONDUCTIVITY FAMILY

#### ANALYZER, PH/ORP/CONDUCTIVITY

- |                                 |     |
|---------------------------------|-----|
| 1. Emerson/Rosemount Analytical | 44% |
| 2. Invensys/Foxboro             | 13% |
| 3. Yokogawa                     | 11% |

\* Differences of less than 3% are of marginal statistical significance.



ABB'S PUV23402 AND PIR3502

### ANALYZER, SPECTROMETER

- |                                 |     |
|---------------------------------|-----|
| 1. ABB                          | 23% |
| 2. Emerson/Rosemount Analytical | 18% |
| Hach                            | 18% |



ROSEMOUNT ANALYTICAL'S MICROCEM

### ANALYZER, STACK GAS/EMISSIONS

- |                                 |     |
|---------------------------------|-----|
| 1. Emerson/Rosemount Analytical | 27% |
| 2. Ametek Thermox               | 13% |
| 3.* Siemens Energy & Automation | 7%  |
| ABB                             | 5%  |
| Teco                            | 5%  |



AMETEK/PANALARM'S SERIES 90

### ANNUNCIATOR

- |                         |     |
|-------------------------|-----|
| 1. Ametek Panalarm      | 38% |
| 2. Ronan Engineering    | 18% |
| 3.* Rockwell Automation | 6%  |
| Beta Hathaway           | 5%  |



SIEMENS' 353

### CONTROLLER, PROCESS LOOP

- |                                |     |
|--------------------------------|-----|
| 1. Siemens Energy & Automation | 24% |
| 2. Honeywell Industrial        | 19% |
| Measurement & Control          |     |
| 3. Emerson Process Management  | 12% |
| 4.* Yokogawa                   | 9%  |
| ABB                            | 8%  |
| Invensys/Foxboro               | 7%  |



ROCKWELL'S CONTROLOGIX

### CONTROLLER, PROGRAMMABLE LOGIC

- |                             |     |
|-----------------------------|-----|
| 1. Rockwell Automation      | 65% |
| 2. Schneider Electric       | 13% |
| 3. GE Fanuc                 | 6%  |
| Siemens Energy & Automation | 6%  |



EMERSON'S DELTAV

### CONTROL SYSTEM, HYBRID

- |                                 |     |
|---------------------------------|-----|
| 1. Emerson Process Management   | 41% |
| 2. Rockwell Automation          | 17% |
| 3. Honeywell Industry Solutions | 12% |
| 4. Siemens Energy & Automation  | 8%  |



EMERSON'S DELTAV

### CONTROL SYSTEM, PROCESS

- |                                 |     |
|---------------------------------|-----|
| 1. Emerson Process Management   | 45% |
| 2. Honeywell Industry Solutions | 15% |
| 3.* Rockwell Automation         | 9%  |
| Invensys/Foxboro                | 8%  |
| 5.* Siemens Energy & Automation | 6%  |
| ABB                             | 5%  |



TRICONEX'S TRIDENT

### CONTROL SYSTEM, SAFETY/EMERGENCY SHUTDOWN

- |                                  |     |
|----------------------------------|-----|
| 1. Invensys/Triconex             | 27% |
| 2. Siemens Energy & Automation   | 16% |
| 3.* Honeywell Industry Solutions | 11% |
| Rockwell Automation              | 10% |
| 5. Emerson Process Automation    | 5%  |



FISHER'S W8119

### CONTROL VALVE

- |                            |     |
|----------------------------|-----|
| 1. Emerson/Fisher Controls | 63% |
| 2.* Flowserve/Valtek       | 6%  |
| Dresser Masoneilan         | 5%  |



ALLEN-BRADLEY'S POWERFLEX

### ELECTRIC MOTOR DRIVE

- |                             |     |
|-----------------------------|-----|
| 1. Rockwell Automation/     | 39% |
| Allen-Bradley               |     |
| 2.* ABB                     | 9%  |
| Siemens Energy & Automation | 9%  |
| GE Power Systems            | 7%  |
| 5. Schneider Electric       | 5%  |
| Baldor                      | 5%  |



HOFFMAN'S WATERSHED SERIES

### ENCLOSURE

- |                        |     |
|------------------------|-----|
| 1. Hoffman Engineering | 65% |
| 2. Rittal              | 20% |



MICRO MOTION'S CORIOLIS OFFERINGS

### FLOWMETER, CORIOLIS MASS

- |                         |     |
|-------------------------|-----|
| 1. Emerson/Micro Motion | 81% |
| 2. Endress + Hauser     | 7%  |

\* Differences of less than 3% are of marginal statistical significance.



ROSEMOUNT'S SERIES 8700

### FLOWMETER, MAGNETIC

1. Emerson/Rosemount	36%
2. Invensys/Foxboro	15%
3.* Krohne	10%
Endress + Hauser	9%
Yokogawa	9%
6. ABB	7%



SIEMENS MILLTRONICS' OCM

### FLOWMETER, OPEN CHANNEL

1. Siemens Milltronics	30%
2. Ametek Drexelbrook	19%
3.* ISCO	9%
Emerson/Rosemount	8%
4. Endress + Hauser	6%
Invensys/Foxboro	6%



BROOKS' MODEL BM10

### FLOWMETER, POSITIVE DISPLACEMENT

1. Emerson/Brooks Instrument	49%
2. A.O. Smith	11%
3. Badger Meter	7%



FLUID COMPONENTS' ST98 FAST RESPONSE

### FLOWMETER, THERMAL MASS

1. Fluid Components Intl.	50%
2. Emerson/Brooks Instrument	17%
3. Kurz Instrument	13%
4. Sierra Instruments	8%



DANIEL'S MODEL 1200

### FLOWMETER, TURBINE

1. Emerson/Daniel	25%
2. Hoffer Flow Control	14%
3. Invensys/Foxboro	8%
4. A.O. Smith	5%



PANAMETRICS' DIGITALFLOW GC868

### FLOWMETER, ULTRASONIC

1. GE Panametrics	34%
2. Controlotron	13%
3. Daniel	9%
Peek Polysonics	7%
Siemens Milltronics	7%



BROOKS' MODEL MT 3809

### FLOWMETER, VARIABLE AREA

1. Emerson/Brooks Instrument	59%
2. ABB	7%
Dwyer Instrument	7%



ROSEMOUNT'S MODEL 8800CR

### FLOWMETER, VORTEX

1. Emerson/Rosemount	34%
2. Yokogawa	28%
3. Invensys/Foxboro	19%
4. Endress + Hauser	5%



FLUID COMPONENTS' NUTEC INDUSTRIAL

### FLOW SWITCH

1. Fluid Components Intl.	33%
2. GEMS	11%
3.* IFM Efector	7%
Magnetrol	7%
Dwyer Instrument	5%
McDonnell Miller	5%
SOR	5%



DELL'S POWEREDGE 2650

### INDUSTRIAL COMPUTER

1. Dell	27%
2.* Rockwell Automation	7%
Xycom	6%
Advantech	5%
Siemens Energy & Automation	5%



ALLEN-BRADLEY'S I/O FAMILY

### INPUT/OUTPUT SYSTEM

1. Rockwell Automation/Allen-Bradley	33%
2. Emerson Process Management	16%
3. Siemens Energy & Automation	8%
4. Opto 22	6%



MTL'S 8000 SERIES

### INTRINSIC SAFETY BARRIER

1. MTL	32%
2. R. Stahl	20%
3. Pepperl + Fuchs	17%
4. Phoenix Contact	5%

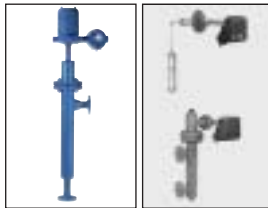
\* Differences of less than 3% are of marginal statistical significance.



DREXELBROOK'S UNIVERSAL III

### LEVEL GAUGE, ELECTRICAL PROPERTY-BASED

1. Ametek Drexelbrook	40%
2. Emerson/Rosemount	16%
3.* Endress + Hauser	9%
Magnetrol	7%



MAGNETROL'S ES II MODULE  
FISHER'S W3121

### LEVEL GAUGE, FLOAT/DISPLACER

1.* Magnetrol	31%
Emerson/Fisher Controls	29%
3.* GEMS	13%
K-Tek	13%
5. MTS	5%



SAAB'S TANKRADAR REX

### LEVEL GAUGE, INVENTORY GRADE

1. Emerson/Saab-Rosemount	30%
2. Endress + Hauser	13%
3.* Enraf	10%
Invensys/Foxboro	8%



TEXAS NUCLEAR'S LEVELPRO

### LEVEL GAUGE, NUCLEAR

1. Thermo MeasureTech	44%
2. Ohmart/Vega	35%
3.* Ronan Engineering	7%
Berthold	5%



SAAB'S PRO ITG

### LEVEL GAUGE, RADAR

1. Emerson/Saab-Rosemount	31%
2. Ohmart/Vega	24%
3. Endress + Hauser	11%
Magnetrol	11%
5.* Krohne	7%
Ametek Drexelbrook	6%



SIEMENS MILLTRONICS' MULTIRANGER

### LEVEL GAUGE, ULTRASONIC

1. Siemens Milltronics	37%
2.* Endress + Hauser	14%
Ametek Drexelbrook	13%
4.* Ohmart/Vega	6%
Emerson/Rosemount	5%
Magnetrol	5%



DREXELBROOK'S THE POINT

### LEVEL SWITCH, POINT

1. Ametek Drexelbrook	20%
2. Endress + Hauser	15%
3.* Magnetrol	9%
Thermo MeasureTech	9%
Bindicator	8%
6. K-Tek	5%
SOR	5%



ALLEN-BRADLEY'S PANELVIEW PLUS 1250

### OPERATOR INTERFACE TERMINAL

1. Rockwell Automation	30%
2. Dell	12%
3.* Siemens Energy & Automation	9%
GE Fanuc	8%
5. Emerson Process Management	5%
Honeywell Industry Solutions	5%



ALLEN-BRADLEY'S IN-VIEW

### PANEL DISPLAY

1. Rockwell Automation/ Allen-Bradley	27%
2.* Red Lion	10%
Siemens Energy & Automation	8%
4. Precision Digital	5%



FLUKE'S MODEL 744

### PORTABLE CALIBRATOR

1. Fluke/Altek/Transation	73%
---------------------------	-----



SOLA'S POWER SUPPLY GROUP

### POWER SUPPLY

1. Sola Hevi-Duty	27%
2. Acopian	22%
3. Phoenix Contact	9%
4.* Power One	6%
Invensys/Lambda	5%



ROSEMOUNT'S MODEL 3051S

### PRESSURE TRANSMITTER

1. Emerson/Rosemount	60%
2.* Invensys/Foxboro	9%
Honeywell Measurement & Control	7%
4. Yokogawa	5%

\* Differences of less than 3% are of marginal statistical significance.



BEBCO'S PURGE FAMILY

### PURGE SYSTEM

1. Bebco	64%
2. Expo-Telektron	5%
Pepperl + Fuchs	5%



YOKOGAWA'S DX200 DAQSTATION  
HONEYWELL'S MINITREND

### RECORDER

1.* Yokogawa	27%
Honeywell Measurement & Control	25%
3. Invensys/Eurotherm Chessel	14%
4. ABB	8%



ALLEN-BRADLEY'S SLC 500 SERIES

### REMOTE TERMINAL UNIT

1. Rockwell Automation/ Allen-Bradley	24%
2. Emerson Process Management	15%
3.* Honeywell Industry Solutions	7%
Bristol Babcock	5%
Siemens Energy & Automation	5%



MOORE'S MODEL ECT

### SIGNAL CONDITIONER

1. Moore Industries	26%
2. Invensys/Action Instruments	20%
3. Phoenix Contact	9%
4.* M System Technology	6%
Acromag	5%



EMERSON'S AMS

### SOFTWARE, ASSET MANAGEMENT

1. Emerson Process Management	56%
2. Honeywell Industry Solutions	5%
SAP	5%



EMERSON'S DELTAV BATCH

### SOFTWARE, BATCH CONTROL/MANAGEMENT

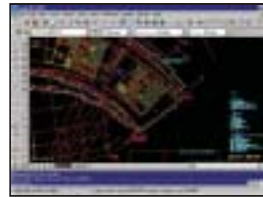
1. Emerson Process Management	42%
2.* Rockwell Automation	13%
Honeywell Industry Solutions	12%
4. Invensys/Wonderware	9%



EMERSON'S CALIBRATION ASSISTANT

### SOFTWARE, CALIBRATION MANAGEMENT

1. Emerson Process Management	51%
2. Honeywell Industry Solutions	12%



AUTODESK'S AUTOCAD 2002

### SOFTWARE, DESIGN/DOCUMENTATION

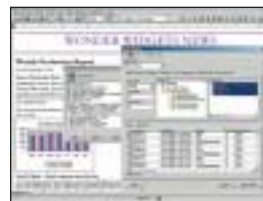
1. Autodesk	31%
2. Emerson Process Management	14%
3. Intergraph	9%
4.* Siemens Energy & Automation	6%
Microsoft/Visio	5%



EMERSON'S DELTAV INSPECT

### SOFTWARE, EXPERT SYSTEM

1. Emerson Process Management	27%
2. Gensym	19%
3. Honeywell Industry Solutions	16%



WONDERWARE'S INSQL

### SOFTWARE, HUMAN-MACHINE INTERFACE

1. Invensys/Wonderware	29%
2. Intellution/GE Fanuc	23%
3. Rockwell Automation	15%
4. Emerson Process Management	9%
5. Honeywell Industry Solutions	6%



EMERSON'S DELTAV TUNE  
EXPERTUNE'S ANALYZER & TUNER

### SOFTWARE, LOOP TUNING

1.* Emerson Process Management	33%
Expertune	31%
3. Honeywell Industry Solutions	8%

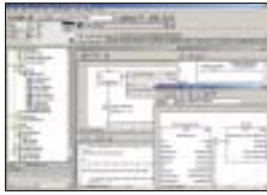


EMERSON'S DELTAV NEURAL

### SOFTWARE, NEURAL NETWORK

1. Emerson Process Management	54%
2. Pavilion Technologies	7%

\* Differences of less than 3% are of marginal statistical significance.



ROCKWELL'S RSLOGIX 5000

### SOFTWARE, PLC PROGRAMMING

1. Rockwell Automation	60%
2. Schneider Electric	14%
3.* Siemens Energy & Automation	7%
GE Fanuc	6%



EMERSON'S DELTAV

### SOFTWARE, PROCESS CONTROL

1. Emerson Process Management	40%
2. Honeywell Industry Solutions	12%
3. Rockwell Automation	9%
4.* Intellution/GE Fanuc	6%
AspenTech	5%
Invensys Wonderware	5%



INTELLUTION'S IFIX

### SOFTWARE, SCADA

1. Intellution/GE Fanuc	17%
2.* Emerson Process Management	12%
Invensys/Wonderware	11%
Honeywell Industry Solutions	10%
4. Rockwell Automation	9%
5.* OSI Software	6%
AspenTech	5%



EMERSON'S DELTAV SIMULATE PRO

### SOFTWARE, SIMULATION

1. Emerson Process Management	23%
2.* Munger/Mimic	12%
AspenTech	11%
4.* Honeywell Industry Solutions	7%
ABB	5%
Hyprotech	5%
Rockwell Automation	5%



RAYTEK'S MID

### TEMPERATURE SENSOR, INFRARED

1. Raytek	28%
2. Iacon	23%
3. FLIR Systems	8%
Land Infrared	8%
Omega Engineering	8%



ROSEMOUNT'S RTDS

### TEMPERATURE SENSOR, RTD

1. Emerson/Rosemount	30%
2. Pyromation	12%
3. Omega Engineering	8%
4. Invensys/Foxboro	5%



ROSEMOUNT'S THERMOCOUPLES  
OMEGA ENGINEERING'S  
THERMOCOUPLES

### TEMPERATURE SENSOR, THERMOCOUPLE

1.* Emerson/Rosemount	17%
Omega Engineering	15%
3.* Pyromation	6%
Invensys/Foxboro	5%
Sandelius	5%



ROSEMOUNT'S 3144P

### TEMPERATURE TRANSMITTER

1. Emerson/Rosemount	49%
2.* Invensys/Foxboro	8%
Honeywell Industrial	8%
Measurement & Control	
Moore Industries	7%
5. Omega Engineering	5%
Yokogawa	5%



PHOENIX CONTACT'S MINI  
SPRING CAGE FAMILY

### TERMINAL BLOCK

1. Phoenix Contact	34%
2.* Weidmuller	22%
Rockwell Automation	20%
4. ABB/Entelec	10%



BENTLY NEVADA'S SYSTEM 1

### VIBRATION INSTRUMENTATION

1. Bently Nevada	76%
2. PMC/Beta	7%
Rockwell Automation/Entek IRD	7%



BELDEN'S INDUSTRIAL  
ETHERNET CABLING

### WIRE & CABLE

1. Belden	63%
2. Anixter	6%



METTLER TOLEDO'S Q.I.

### WEIGHING SYSTEM/LOAD CELL

1. Mettler Toledo	29%
2. BLH Electronics	18%
3. Hardy Instrument	14%
4. Kistler Morse	9%
5. Rice Lake	5%