

DIVISIONS + CONTACT INFORMATION

Emerson Process Management is part of Emerson, a global company that brings together technology and engineering to provide innovative solutions for our customers in a wide range of industrial, commercial, and consumer markets. Our priority is to design, produce and deliver products, systems and solutions that make people's lives better.



Asset Optimization 865 675 2400
Availability and Performance x2547

Brooks Instrument 215 362 3500
Low Flow Measurement and Control 888 554 FLOW

Daniel Measurement and Control 713 467 6000
Natural Gas and Liquid Flow Measurement, Predictive Diagnostics, Custody Transfer, Systems and Service 888 FLOW 001

Fisher Control Valves 641 754 3011
Control Valves and Instruments

MicroMotion 303 530 8459
Coriolis Meters 800 522 6277

Mobrey Measurement 952 906 8888
Level & Suspended Solids Measurement 800 999 9307

Power & Water Solutions 412 963 4000
Control Systems & Project Implementation 800 445 9723

Process Systems & Solutions 512 832 3774
DeltaV, SmartProcess, SureService 800 833 8314

Remote Automation Solutions 860 945 2200
RTUs, Flow Computers, Remote Process Connectivity and Control 800 395 5497

Rosemount 952 906 8888
Pressure, Temperature, Level & Flow Measurement 800 999 9307

Rosemount Tank Gauging 011 46 31 337 0000
Tank Gauging 800 722 2865

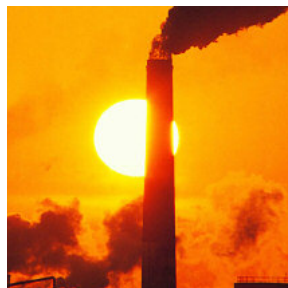
COMPLETE PROCESS ANALYTICAL SOLUTIONS

GAS CHROMATOGRAPHY



HEADQUARTERS:
GAS CHROMATOGRAPHY
Emerson Process Management
Rosemount Analytical
5650 Brittmoore Road
Houston, TX 77041 USA
T 713.827.6380
T 866.422.3683
F 713.827.3865
gc.csc@emersonprocess.com

GAS



HEADQUARTERS:
PROCESS ANALYTICAL
Emerson Process Management
Rosemount Analytical
6565 P Davis Industrial Parkway
Solon, OH 44139 USA
T 440 914 1261
T 800 433 6076
F 440 914 1262
gas.csc@emersonprocess.com

LIQUID



HEADQUARTERS:
LIQUID ANALYTICAL
Emerson Process Management
Rosemount Analytical
2400 Barranca Parkway
Irvine, CA 92606 USA
T 949.757.8500
T 800.854.8257
F 949.474.7250
liquid.csc@emersonprocess.com

Emerson Process Management and Rosemount Analytical are marks of Emerson Process Management group of companies.
© Rosemount Analytical Inc. 2007. All rights reserved. Printed in the U.S.A.

Advanced Analytical Instrumentation



> GAS CHROMATOGRAPHY
> GAS
> LIQUID

ROSEMOUNT
Analytical

EMERSON
Process Management

ROSEMOUNT
Analytical

EMERSON
Process Management

> GAS CHROMATOGRAPHY

Refineries

- > Alkylation unit
- > Aromatics unit
- > BTX unit
- > Catalytic reformer / Isomerization unit
- > Coker unit
- > Hydrotreating unit
- > Sulfur unit

Petrochemical

- > Acrylonitrile plants
- > Ethylene plants
- > Polymer plants
- > Polyethylene plants

Fertilizer Production

- > Ammonia
- > Hydrogen and nitrogen analysis

Gas Processing

- > Cryogenic gas plants / Absorption
- > Gas bottling plants
- > Gas separation
- > LNG and NGL plants

Power Generation

- > Co-generation plants
- > Gas turbine control
- > Natural gas fired plants

Environmental Monitoring

- > Ambient air monitoring
- > H₂S in flare and fuel gases
- > HRVOCs in flares and cooling towers

Landfill Monitoring

- > Calorific value



> COMBUSTION, PROCESS AND EMISSION ANALYSIS

Combustion Analysis

Optimization

(O₂, CO, CO₂, SO₂, Hydrocarbons)

- > Utility & Industrial Boilers
- > Refinery Process Heaters
- > Pulp & Paper Bark Boilers
- > Pulp & Paper Recovery Boilers
- > Incinerators
- > Chemical Process Heaters
- > Furnaces
- > Pulp & Paper
- > Coal Gasification

Process Analyzers

- > Oil and Gas
- > Refining
- > Chemical and Petrochemical
- > Air Separation
- > Power
- > Mining and Metal Processing
- > Cement and Ceramics
- > Biogas

Environmental

- > Continuous Emissions Monitoring
- > NO_x reduction
- > SCR Efficiency



> CONTINUOUS ON-LINE LIQUID ANALYSIS

pH/ORP

- > Chemical Processing
- > Pulp & Paper
- > Textiles
- > Oil, Gas, Petroleum Refining
- > Mining & Metal Processing
- > Food & Beverage
- > Water & Wastewater
- > Ultra Pure Water
- > Life Science

Conductivity

- > Chemical Processing
- > Textiles
- > Pulp & Paper
- > Steam Generation & Utility
- > Oil, Gas, Petroleum Refining
- > Mining & Metal Processing
- > Food & Beverage
- > Ultra Pure Water
- > Life Science

Dissolved Oxygen / Ozone

- > Food & beverage
- > Life Science
- > Water & Wastewater

Chlorine, Free, Mono and Total

- > Food and Beverage
- > Life Science
- > Drinking Water
- > Wastewater

Turbidity

- > Water & Wastewater
- > Food & Beverage

