

# High Process Noise Diagnostic Improves Measurement Reliability and Lowers Maintenance Costs

## RESULTS

- Reduced process variability
- Reduced maintenance costs by \$6,000 annually
- Improved measurement reliability and product quality
- Improved throughput by decreasing overall batch time

## APPLICATION

Water Flow-Slurry

### Application Characteristic:

Molecular sieve water removal consisting of 5-10% polymer solids

## CUSTOMER

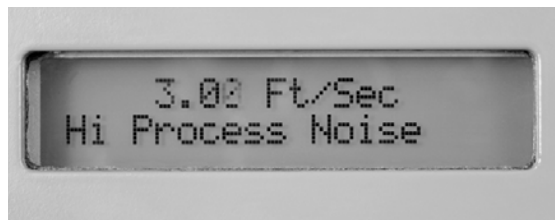
A major chemical company

## CHALLENGE

A major chemical company was using another manufacturer's magnetic flowmeters on their molecular sieve water removal lines. The process has a 5-10% polymer solids content which resulted in a noisy flow signal. Operators logged three trouble calls per year for each of the four magmeters. Each time operations complained of an erratic flow rate, technicians did not find any instrument problems. For the twelve work orders per year, this customer estimated they spent \$6,000 in maintenance cost to try and locate the source of the erratic flow rate. Due to the noisy flow signal and the inability of the installed magmeters to filter the noise, or provide any diagnostic information to remedy the noise issue, they had to dampen the output to get a stable signal. This resulted in delayed response time, put the process at risk for reduced quality, and could have potentially damaged downstream mechanics. Since the amount of slurry feed is critical to their process, operators were required to perform visual inspections on the reactors to ensure product quality for every batch.



*The DA1 high process noise diagnostic improved measurement stability without increased damping, to reduce overall batch time.*



*High Process Noise Diagnostic*

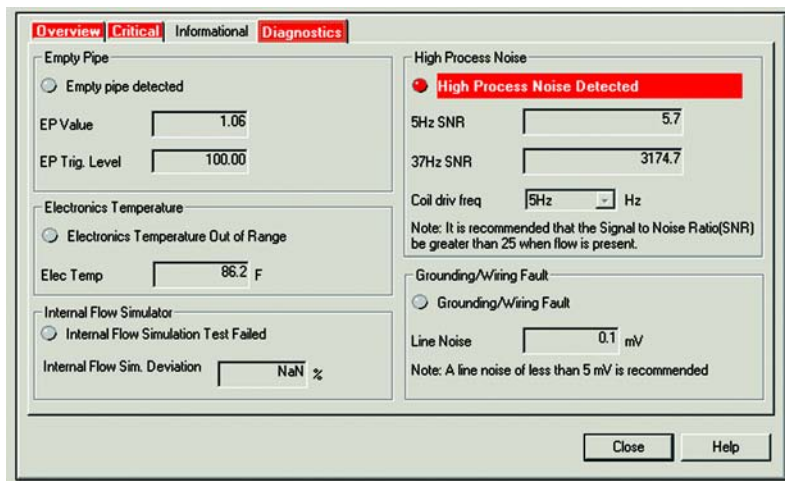
**ROSEMOUNT**<sup>®</sup>

For more information:  
[www.rosemount.com](http://www.rosemount.com)

  
**EMERSON**<sup>™</sup>  
Process Management

## SOLUTION

The Rosemount 8732E transmitter with the DA1 high process noise diagnostic option gave this customer the ability verify the noise levels within the process, allowing for quick and easy troubleshooting. The high process noise diagnostic can be run from the local operator interface or AMS<sup>®</sup> Suite. The DA1 high process noise diagnostic provided a signal to noise ratio at both 5 Hz and 37 Hz. Emerson recommends that the signal to noise ratio be greater than 25 when flow is present. Seeing that the signal to noise ratio at 5 Hz was substantially less than at 37 Hz, maintenance technicians changed the coil drive frequency to 37 Hz in order to reduce the variability in the output without having to add any damping. The more stable output provided tighter control of the slurry feed, which eliminated the need for visual inspection of the reactors and decreased the overall batch times. Not only did the DA1 high process noise diagnostic solve the problem, the technicians were able to fix the problem without shutting down the process. In addition, this customer would remove their previously installed flowmeters for inspection and cleaning once per year costing \$6,000. With the diagnostic information provided by the Rosemount 8732E transmitter, this customer knows their magmeters are working as intended, and they have eliminated this practice from their yearly maintenance procedures.



*High Process Noise Diagnostic in AMS Suite*

## RESOURCES

<http://www.emersonprocess.com/rosemount/products/flow/m8732e.html>

The Emerson logo is a trade mark and service mark of Emerson Electric Co. Rosemount and the Rosemount logotype are registered trademarks of Rosemount Inc. All other marks are the property of their respective owners.

Standard Terms and Conditions of Sale can be found at [www.rosemount.com/terms\\_of\\_sale](http://www.rosemount.com/terms_of_sale)

**Emerson Process Management**

Rosemount Division  
8200 Market Boulevard  
Chanhassen, MN 55317 USA  
T (U.S.) 1-800-999-9307  
T (International) (952) 906-8888  
F (952) 949-7001

[www.rosemount.com](http://www.rosemount.com)

**Emerson Process Management Flow**

Neonstraat 1  
6718 WX Ede  
The Netherlands  
T +31 (0)318 495555  
F +31(0) 318 495556

**Emerson Process Management**

Emerson Process Management Asia Pacific  
Private Limited  
1 Pandan Crescent  
Singapore 128461  
T (65) 6777 8211  
F (65) 6777 0947  
[Enquiries@AP.EmersonProcess.com](mailto:Enquiries@AP.EmersonProcess.com)

**ROSEMOUNT**<sup>®</sup>

For more information:  
[www.rosemount.com](http://www.rosemount.com)



**EMERSON**<sup>™</sup>  
Process Management