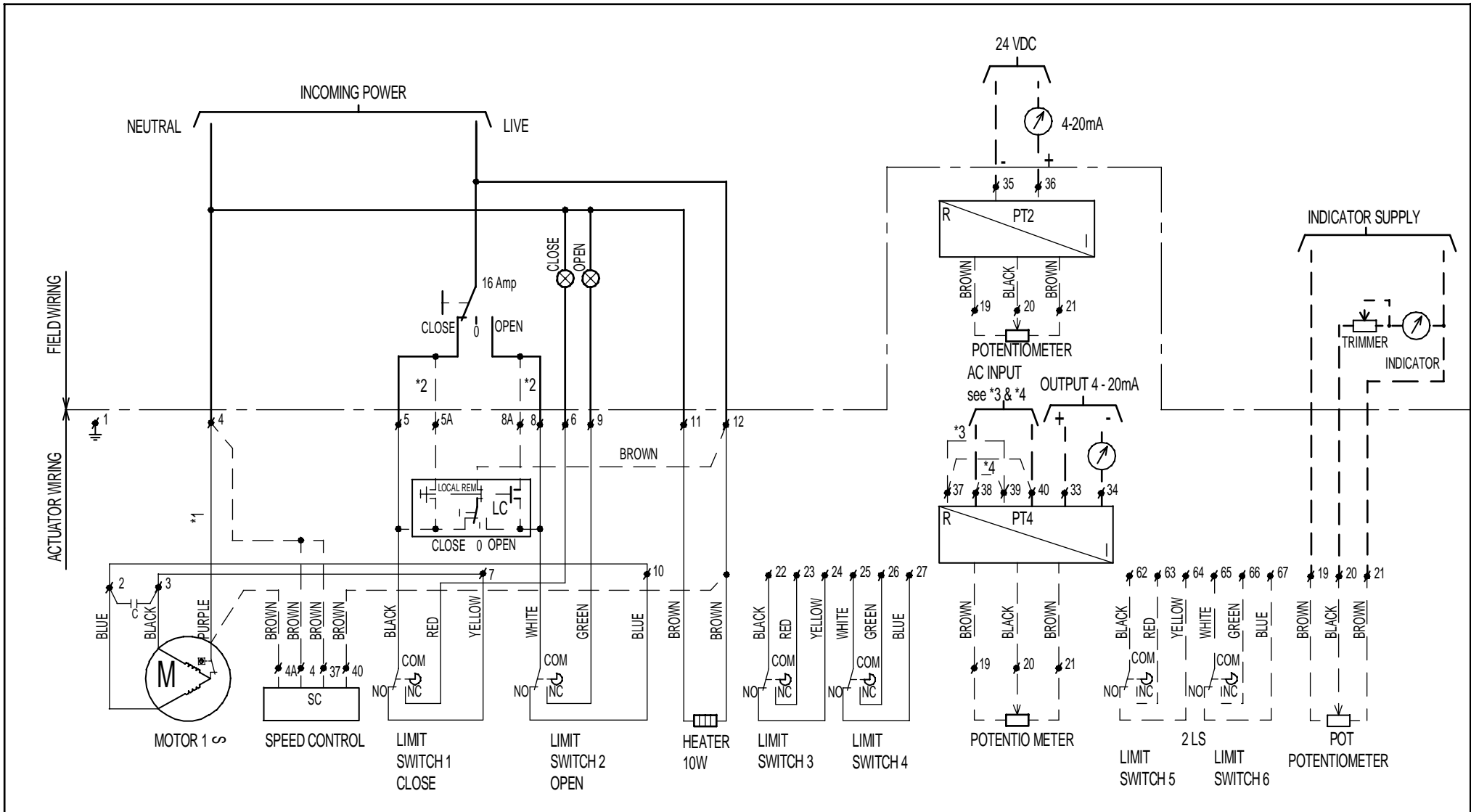


**IMPORTANT**  
 Each actuator must be powered through its own individual switch or relay contacts to avoid cross feed between two or more actuators.

LIMIT SWITCHES SHOWN IN MID STROKE

<b>ELO-MATIC</b> INTERNATIONAL LOCATION: HENGLO 101 THE NETHERLANDS		Format : A3	Drn. : AB	Scale : -	Date : 05/10/2000
Material : -		Title : Wiring diagram basic motor 1PH EL55 WP/XP			ENDC nr. : H-0747 / 18/01/2001
Treatment : -		State : Released			Par. : RS
990.40.022				page 1 of 2	Rev. : A



LOCAL CONTROL EX.  
 IN EXPLOSION PROOF EXECUTION  
 BOTH LOCAL/REMOTE AND  
 CLOSE/STOP/OPEN SWITCHES  
 ARE COMBINED INTO ONE SWITCH

- \*1 NO WIRE BY SPEED CONTROL SC
- \*2 CLOSE TO 5A OPEN TO 8A BY LOCAL CONTROL LC
- \*3 LINK PT4 FOR 220V NR 37 & 39
- \*4 LINK PT4 FOR 110V NR 37 & 40 / 38 & 39

LIMIT SWITCHES SHOWN IN MID STROKE  
 KIT OPTIONS, LC\_POT\_2LS\_PT2\_PT4\_SC, ONLY ON ORDER  
 KIT OPTIONS SHOWN IN DOTTED LINES

**IMPORTANT**  
 Each actuator must be powered through its own  
 individual switch or relay contacts to avoid  
 cross feed between two or more actuators.

<b>ELO-MATIC</b> INTERNATIONAL LOCATION: HENGELDO 101 THE NETHERLANDS		Format : A3	Drwn. : AB	Scale : -	Date : 05/10/2000
Material : -		Title : Wiring diagram options motor 1PH EL55 WP/XP			ENCL nr. : H-0747 / 18/01/2001
Treatment : -		Drwnr. : 990.40.022			Par. : RS State : Released
				page 2 of 2	Rev. : A