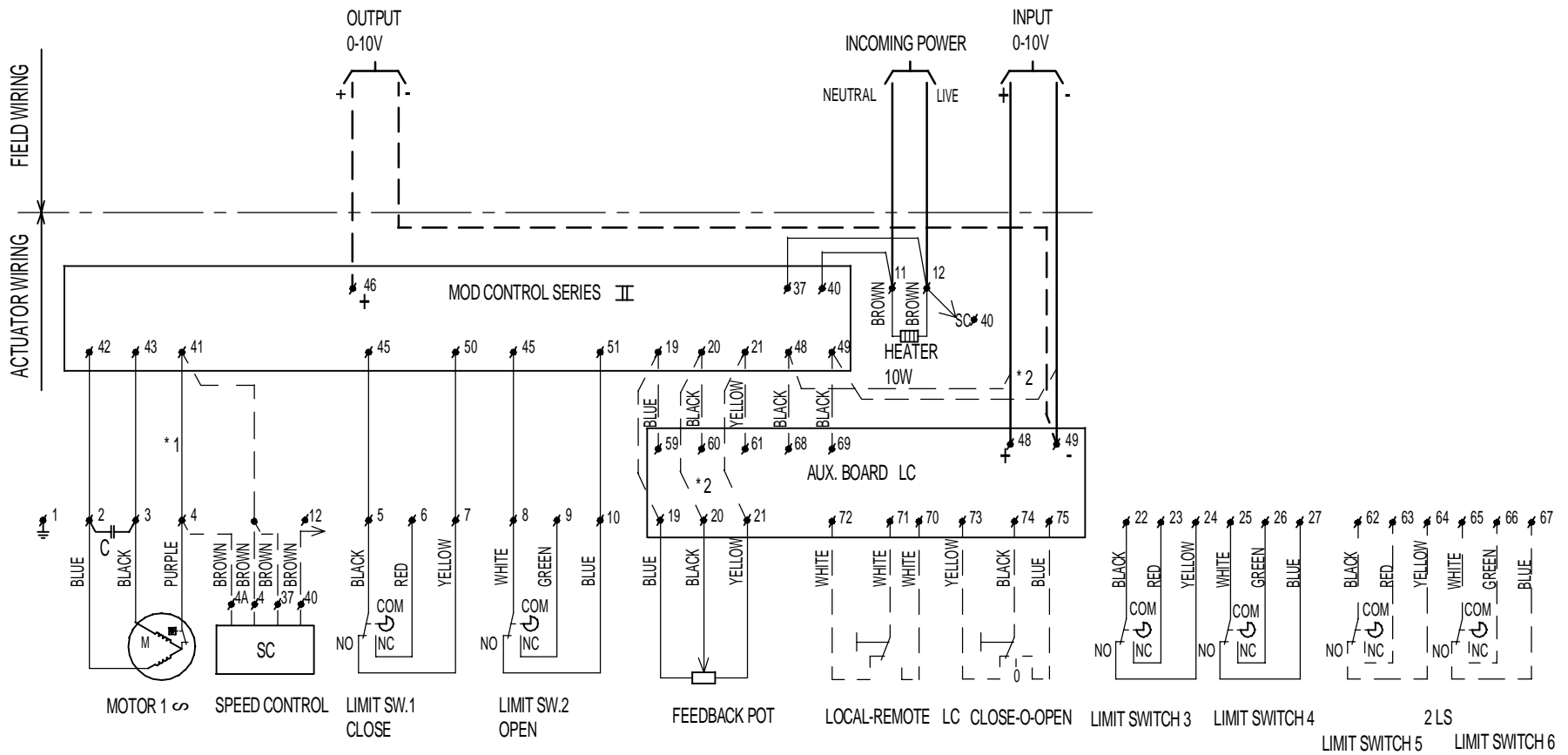


TOLERANCE LIMITS X = ± 0.5  
 UNLESS OTHERWISE SPECIFIED. XX = ± 0.25  
 UNLESS OTHERWISE SPECIFIED. XXX = ± 0.1  
 DIMENSIONS ARE IN MILLIMETERS. ANGULAR = ° / 2  
 - REPEAT ALL DIMS. AND SPAC. CONNECTIONS



\*1 NO WIRE BY SPEEDCONTROL SC  
 \*2 WITHOUT LOCAL CONTROL LC  
 POTMETER TO TERMINAL 19, 20, 21 MOD  
 INPUT 0-10 V TO TERMINAL 48, 49, MOD

**LIMIT SWITCHES SHOWN IN MID STROKE**

KIT OPTIONS, LC\_2LS\_SC, ONLY ON ORDER  
 KIT OPTIONS SHOWN IN DOTTED LINES

**IMPORTANT**

Each actuator must be powered through its own individual switch or two contacts to avoid cross feed between two or more actuators.

<b>ELO-MATIC</b> INTERNATIONAL LOCATION: HENGELD 101, THE NETHERLANDS		Format : A3	Dir. : RS	Scale : -	Date : 03/11/2000
Title : Wiring diagram options		ENC nr. : H-0786 / 03/07/2001		Date : 03/11/2000	
Material : -		State : Released		Par. : RS	
Treatment : -		D/wirt. : 990.40.037		Rev. : B	