

Subject to change without notice

VALVE AUTOMATION SYSTEMS

ELCO-MATIC[®] INTERNATIONAL

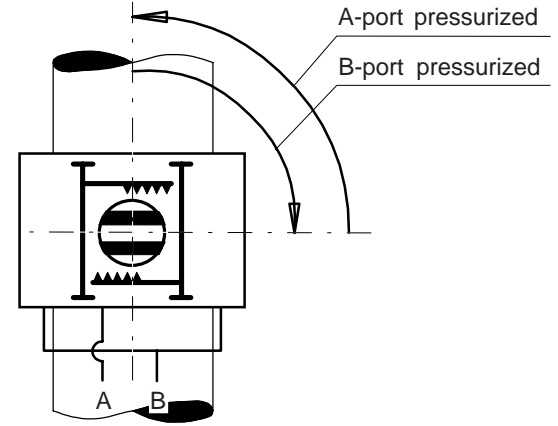
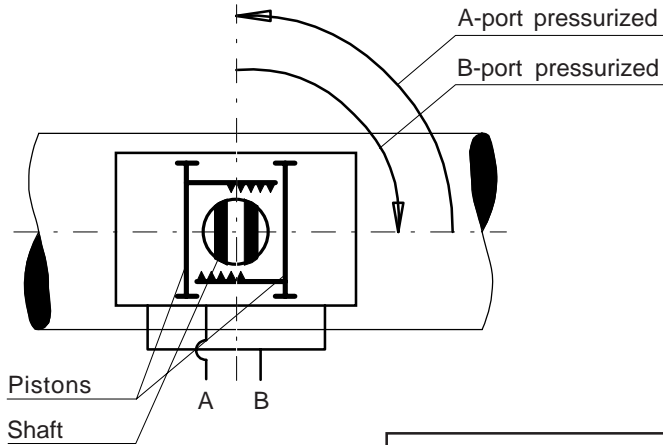
All rights reserved

Nr.:

1.503

Date:

July '97



STANDARD

SHAFT TURNED 90°
(from standard)

MOUNTING IN LINE

A B

MOUNTING ACROSSLINE

All views are from above
Pistons are shown in inner position

(OPTIONAL L1/LF) LIMIT STOPS WILL ADJUST THE VALVE AT **OPEN** POSITION

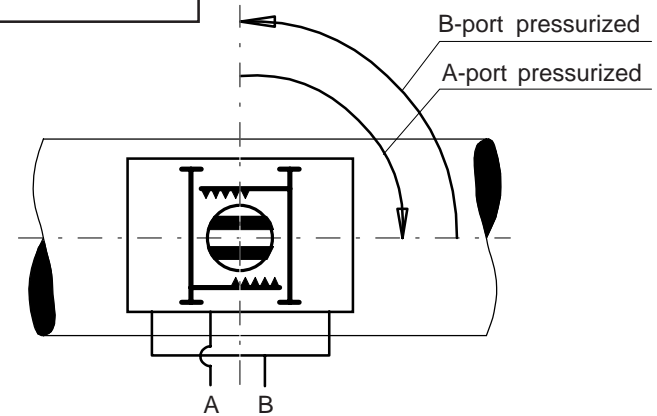
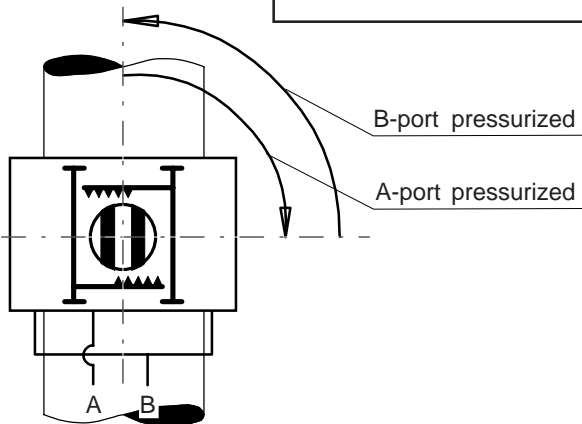
(OPTIONAL L1/LF) LIMIT STOPS WILL ADJUST THE VALVE AT **CLOSED** POSITION

MOUNTING ACROSSLINE

C D

MOUNTING IN LINE
SHAFT TURNED 90°
PISTONS TURNED 180°
(from standard)

PISTONS TURNED 180°
(from standard)



DOUBLE ACTING ACTUATOR ASSEMBLY MODES