

Subject to change without notice

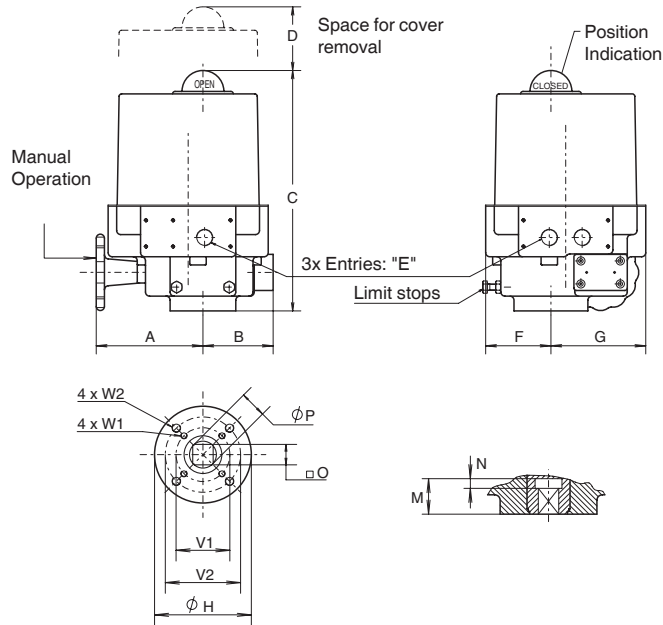
VALVE AUTOMATION  
SYSTEMS

WWW.EL-O-MATIC.COM  
**EL-O-MATIC**

All rights reserved

Nr.: A 5.103

Date: Feb. '05



**Description**

Type EL electric actuators use worm and worm wheel reduction gearing to provide tight positioning control and the self locking feature necessary for controlling larger valves, in particular butterfly valves.

The housing consists of an aluminum base casting and a steel cover, this contains the drive motor and worm gear assembly, together with the anti-condensation heater and main terminal block.

EL actuators take the full range of control options, they have hand wheel geared manual overrides, mechanical end position stops and position indication by a raised dome in the top cover.

**General Specification**

- Nominal Rotation : 90° - factory set to ±3°
- : Adjustable by limit switches: 10° to 320°
- Enclosure : NEMA 4
- Temperature range : -4° to +158°F
- Electrical connection : By 12 and/or 16 point terminal block
- Finish : Two part polyurethane all steel parts zinc plated
- Life : 50,000 cycles minimum
- Limit switches : 4x SPDT V3 micro switches
- Torque switches : 2x SPDT V3 micro switches (Not on EL-20 & EL-55)
- Stall protection : By thermostat in motor windings
- Heater : 10 Watt
- Voltages : 24VDC or 24VAC
- Single phase : 110-130V 50Hz or 60Hz
- : 220-240V50Hz or 240-280V 60Hz
- Three phase : 380-415V 50Hz or 415-460V 60Hz

Minimum customer switch or contactor rating 16Amp.

**Materials**

- Housing : Aluminum alloy
- Cover : Steel
- Drive sleeve : Bronze (Cast Iron)
- Fastenings : Stainless steel

Dim in inches	EL55	EL100	EL150	EL200	EL350	EL500	EL800
A	5.12	5.31	5.31	6.69	6.69	7.68	7.68
B	2.36	3.23	3.23	4.29	4.29	5.04	5.04
C	10.04	11.50	11.50	12.40	12.40	12.52	14.02
D	5.71	6.50	6.50	6.50	6.50	6.50	7.48
3x E	3x 1/2"	3x 1/2"	3x 1/2"	3x 3/4"	3x 3/4"	3x 3/4"	3x 3/4"
F	2.76	3.03	3.03	3.78	3.78	4.84	4.84
G	3.74	4.72	4.72	5.53	5.53	6.54	6.54
H	3.54	3.54	3.54	4.92	4.92	5.91	5.91
M	1.08	1.30	1.30	1.30	1.30	1.89	1.89
N	0.35	0.35	0.35	0.35	0.35	-	-
O max.	0.556	0.752	0.752	0.752	0.752	1.068	1.068
O min.	0.551	0.748	0.748	0.748	0.748	1.063	1.063
P	0.709	0.984	0.984	0.984	0.984	1.417	1.417
V1	1.969	1.969	1.969	2.756	2.756	4.016	4.921
V2	2.756	2.756	2.756	4.016	4.016	-	-
W1	1/4-20 x .47	1/4-20 x .47	1/4-20 x .47	5/16-18 x .59	5/16-18 x .59	3/8-16 x .71	1/2-13 x .79
W2	5/16-18 x .59	5/16-18 x .59	5/16-18 x .59	3/8-16 x .71	3/8-16 x .71	-	-

Performance		EL55	EL100	EL150	EL200	EL350	EL500	EL800	
Torque (In.lb.)	Break	487	885	1328	1770	3098	4425	7081	
	Run	177	310	469	620	1089	1549	2478	
Speed (Sec.)	50Hz	6	7.5	9	13.5	22	25.5	25.5	
	Current (A) (Max.)	230V AC	0.6	1.7	1.7	1.7	1.7	1.7	2.3
		110V AC	1.1	2.9	2.9	2.9	2.9	2.9	4.5
Power (W)	24V DC	5	8	8	8	8	8	-	
	110V AC	100	225	225	225	225	225	315	
	230V AC	72	200	200	200	200	200	305	
Switches-Indication	110V AC	45	118	118	118	118	118	-	
	24V DC	45	118	118	118	118	118	-	
	Torque SPDT at 110/240VAC	-	2x16A	2x16A	2x16A	2x16A	2x16A	2x16A	
Weight (lb.)		13	24	24	36	37	56	57	
Duty rating		30%	30%	30%	30%	30%	30%	30%	

DIMENSIONS AND TECHNICAL DETAILS - ELECTRIC ACTUATOR - EL