

Subject to change without notice

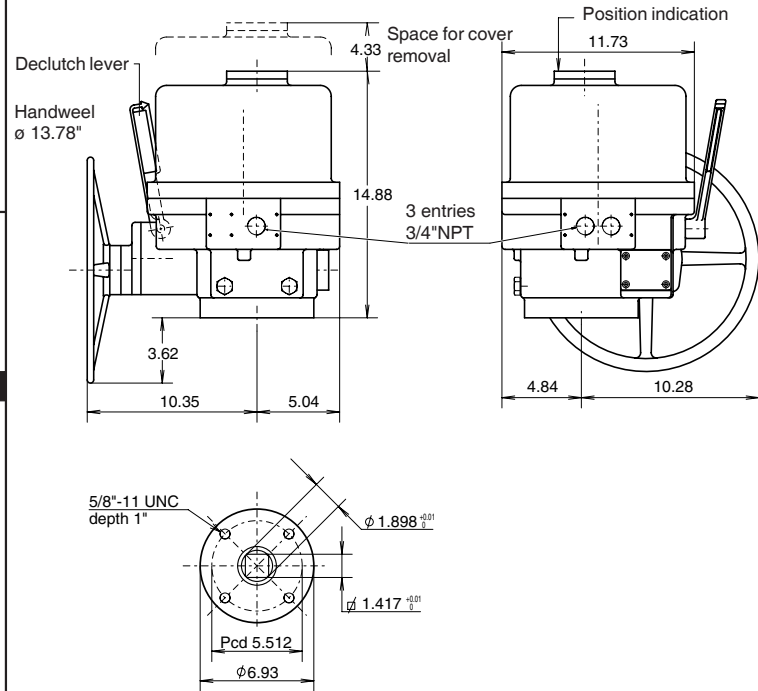
VALVE AUTOMATION
SYSTEMS

EL-O-MATIC
WWW.EL-O-MATIC.COM

All rights reserved

Nr.: A 5.103.2

Date: Feb. '05



Description

EL-1200 actuators use worm and wormwheel reduction gearing to provide tight positioning control and the self locking feature necessary for controlling larger valves, particularly butterfly types.

The housing is of two aluminum castings, it contains the drive motor and worm gear assembly, together with the anti-condensation heater and main terminal strip.

EL-1200 actuator takes the full range of control options, it has mechanical end position stops and torque switches. Visual position indication is by a window in the top cover.

A geared manual override is fitted as standard, it is engaged by means of a declutching lever. When the motor is energized the unit automatically returns to motor operation, thus ensuring operator safety.

General Specification

- Nominal Rotation : 90° - factory set to ±3°
- : Adjustable by limit switches: 10° to 320°
- Enclosure : NEMA 4
- Temperature range : -4° to +158° F
- Electrical connections : By 12 and 16 point internal terminal strip
- Cable entries : 3x 1" NPT (optional 3x M25 or 3x PG21)
- Life : 50,000 operations minimum
- Heater : 10 Watt
- Volts Single phase : 110-130V 50Hz or 60Hz
- : 220-240V 50Hz or 240-280V 60Hz
- Three phase : 380-415V 50Hz or 415-460V 60Hz
- Other voltages : On request
- Stall protection : By torque switches and motor thermostat

Minimum customer switch or contactor rating 16Amp.

Technical data

		EL1200	EL1600
Torque	Break	: 10621 in. lb.	14161 in. lb.
	Run	: 3717 in. lb.	4956 in. lb.
Limit switches		: 4x 16A SPDT	4x 16A SPDT
Torque switches		: 2x 16A SPDT	2x 16A SPDT
Weight		: 81.6 lb.	81.6 lb.
Duty		: 30%	30%

Materials

- Housing : Aluminum alloy
- Cover : Aluminum alloy
- Drivesleeve : Cast Iron
- Fastenings : Stainless steel
- Finish : Two part polyurethane

Voltage/phase/Hz.		120/1/60	230/1/50	380/3/50	460/3/60
Current (A)	break	14	7	2.8	1.1
	run	5.8	2.5	0.6	0.72
Power consumption (W)		535	450	220	266
Power factor		0.83	0.92	0.55	0.53
Operation time	(sec.)	21.5	25.5	25.5	21.5

DIMENSIONS AND TECHNICAL DETAILS

EL 1200/1600