

Subject to change without notice

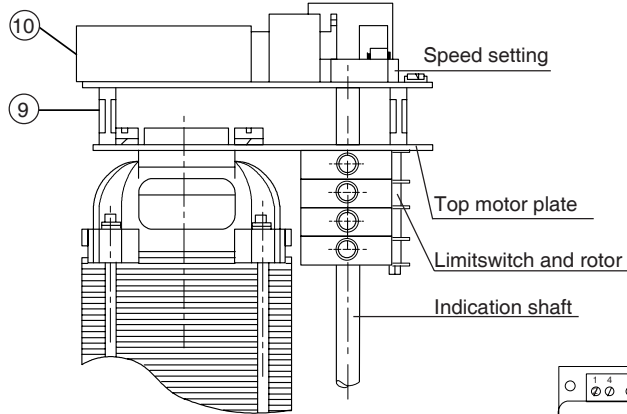
VALVE AUTOMATION  
SYSTEMS

**EL-O-MATIC**  
WWW.EL-O-MATIC.COM

Nr.:  
A 5.204

Date:  
Febr. '00

All rights reserved



**Description**

This electric actuator variation has the addition of an electronic card, this is provided complete with a dual voltage (AC.) power supply, a trimmer for motor pulse adjustments and a triac for motor switching. The circuit provides a timed ON/OFF switching cycle. The ON pulse is fixed at 0.5 sec and the OFF pulse is adjustable via the trimmer. This adjustment is easily carried out with a small screwdriver, with the cover removed.

**Construction**

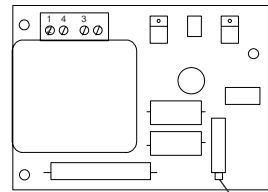
The circuit board is located on top of the motor plate and is wired directly to the terminal strip.

**Specification**

Voltage : 120 or 220V 50/60 Hz.  
Temperature : -4°F to +158°F  
Speed : Model Min. Max.

Model	Min. sec.	Max. sec.
EL 55	11.5	255
EL 100	13.5	298
EL 150	17.0	383
EL 200	25.5	574
EL 350	41.5	936
EL 500	48.5	1085
EL 800	48.5	1085
EL 1200	48.5	1085
EL 2500	53.0	1191

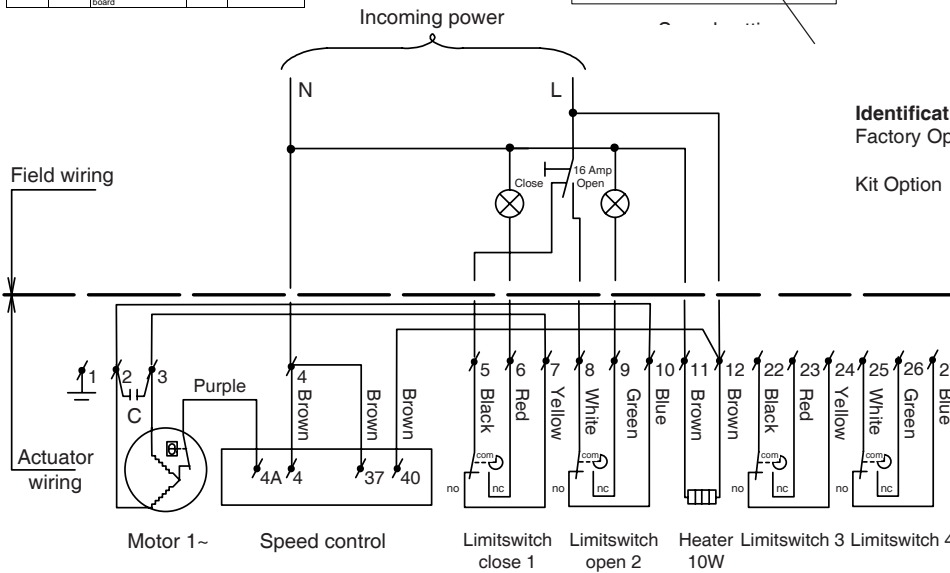
PC no	No req	Description	Used on
9	3	Print spacer	EL55
9	3	Spacer/screw	EL100/2500
10	1	Speed control board	EL55 EL100/2500



**Identification**

Factory Option : Add "+ SC" to the basic actuator size.  
: eg. EL100 120/60 + SC  
Kit Option : Actuator size is added to: "Kit, SC"  
: eg. Kit, SC/EL100 120/60

- Note**
- 1) When supplied as a kit option, all the components as shown are included, together with an instruction sheet.
  - 2) Wiring diagram is shown with actuator in mid position.
  - 3) Wiring diagram for EL55 120V/60Hz + SC



EL ACTUATOR WITH SPEED CONTROL TIMER - AC (Kit option)

SC