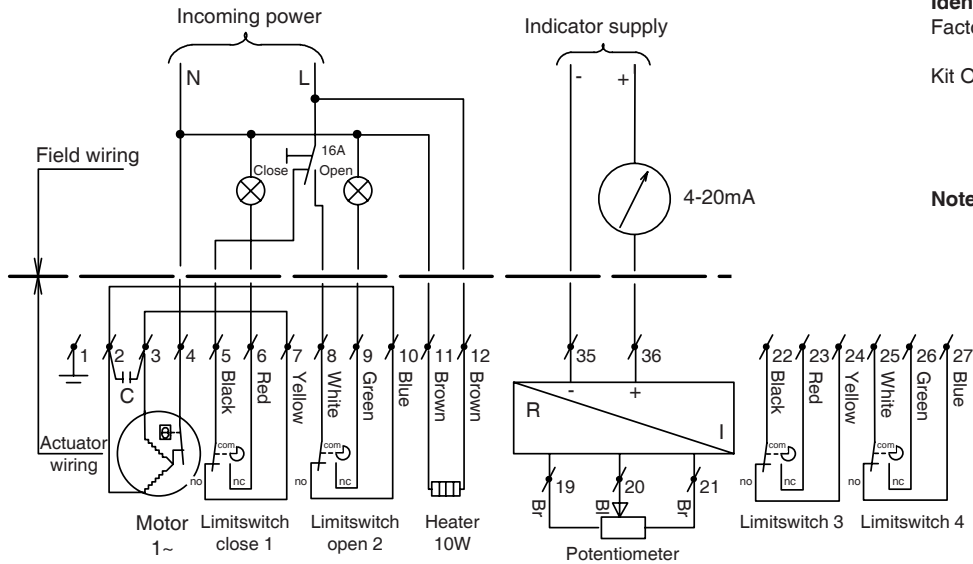


| PC no | No req | Description                  | Used on         |
|-------|--------|------------------------------|-----------------|
| 3     | 1      | Drive pinion (large)         | EL55 EL100/2500 |
| 4     | 1      | Potentiometer pinion (small) | EL55 EL100/2500 |
| 5     | 1      | Potentiometer spacer         | EL55 EL100/2500 |
| 6     | 1      | Potentiometer 10K Ohm        | EL55 EL100/2500 |
| 9     | 3      | Printspacer                  | EL55            |
| 9     | 3      | Spacer/screw                 | EL100/2500      |
| 16    | 1      | Position transmitter board   | EL55 EL100/2500 |



**Description**

This electric actuator variation provides a continuous position indication by transmitting a 4 to 20 milli-Amp signal, this is proportional to the output shaft position.

This 2 wire version consists of a potentiometer and an electronic card fed from an external (24VDC.) power supply.

The card is equipped with trimmers for zero and span adjustment and terminals for the internal and external connections.

**Construction**

The potentiometer and circuit board located on the top motor plate are wired as shown, using the board's own terminal strip.

**Specification**

Input : 24VDC.  
Output : 4 to 20 mA, with adjustable zero and span.  
Temperature : -4°F to +158°F.  
Potentiometer : 10KΩ (see sheet 5.202).

**Identification**

Factory Option : Add "+ PT2" to the basic actuator size.  
: eg. EL100 120/60 + PT2  
Kit Option : Actuator size is added to: "Kit, PT2"  
: eg. Kit, PT2/EL 55 120/60

- Note**
- 1) When supplied as a kit option, all the components as shown are included, together with an instruction sheet.
  - 2) Wiring diagram is shown with actuator in mid position.
  - 3) Wiring diagram for EL55 120V/50Hz + PT2