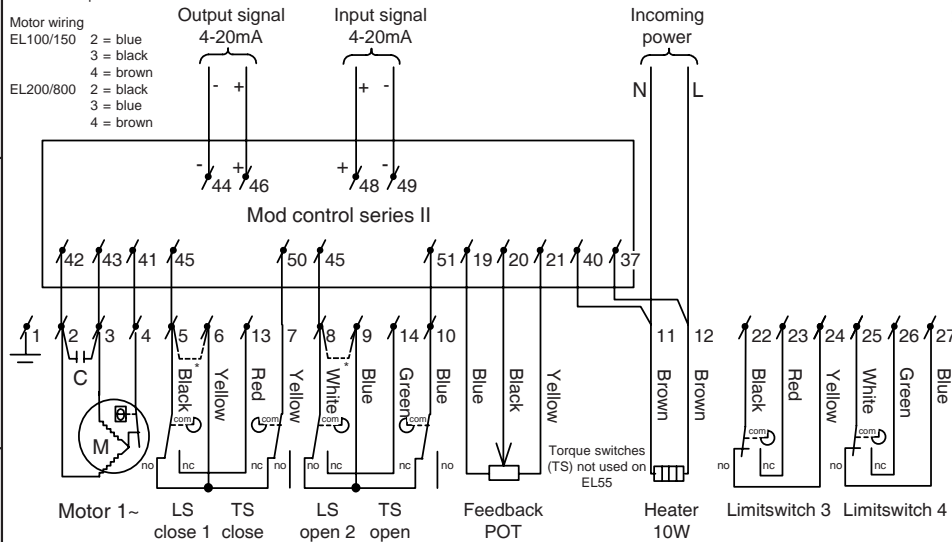


Wiring diagram for EL100-EL1200 + MOD

* Link for torque seated valves

Motor wiring
EL100/150 2 = blue
3 = black
4 = brown
EL200/800 2 = black
3 = blue
4 = brown



Description

This electric actuator variation provides a modulating position control from an incoming 4 to 20 milli-Amp signal.

A very advanced solid-state circuit control board works on the comparator principle, where the incoming control signal is continuously compared to the actual position of the output shaft and signals are sent to the motor to "Open more" or "Close more", until the balanced or null position is achieved. The valve is held in this position until a variation in signal causes a proportional movement of the output shaft.

The circuit board includes trimmers for zero, span adjustment sensitivity adjustment and provision is made for split ranging. LED's are fitted for simplified setting.

A speed control feature reduces the motor speed, by pulsing the motor, as the nul position is approached. This allows greater accuracy without "Overshoot" or "Hunting".

Other standard features include a 4-20 mA position transmitter and "Lock on last position" on signal failure.

Specification

Input : Power Dual 220/240 - 120 50/60 Hz.
: Control 4 to 20 mA, adjustable.
: 0.1 to 35 mA
and 0.1 to 12 mA
or 12 to 35 (for split ranging)

Linearity 3%
Hysteresis 1%
Min. resolution 1%
Zero, span, sensitivity.
4 to 20 mA out put, adjustable zero, fixed span.
-4°F to +158°F.

Identification

Factory Option : Add "MOD" to the basic actuator size.

: eg. EL100 120/60 + MOD

Kit options : Actuator size is added to: "Kit, MOD"

: eg. Kit MOD/EL100 120/60